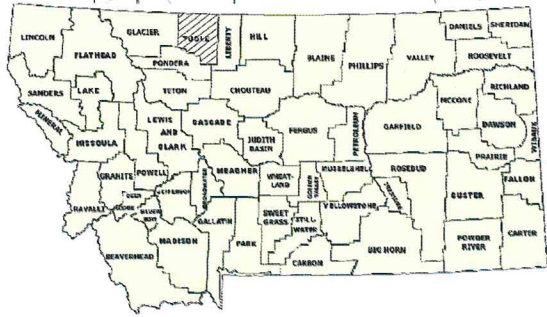
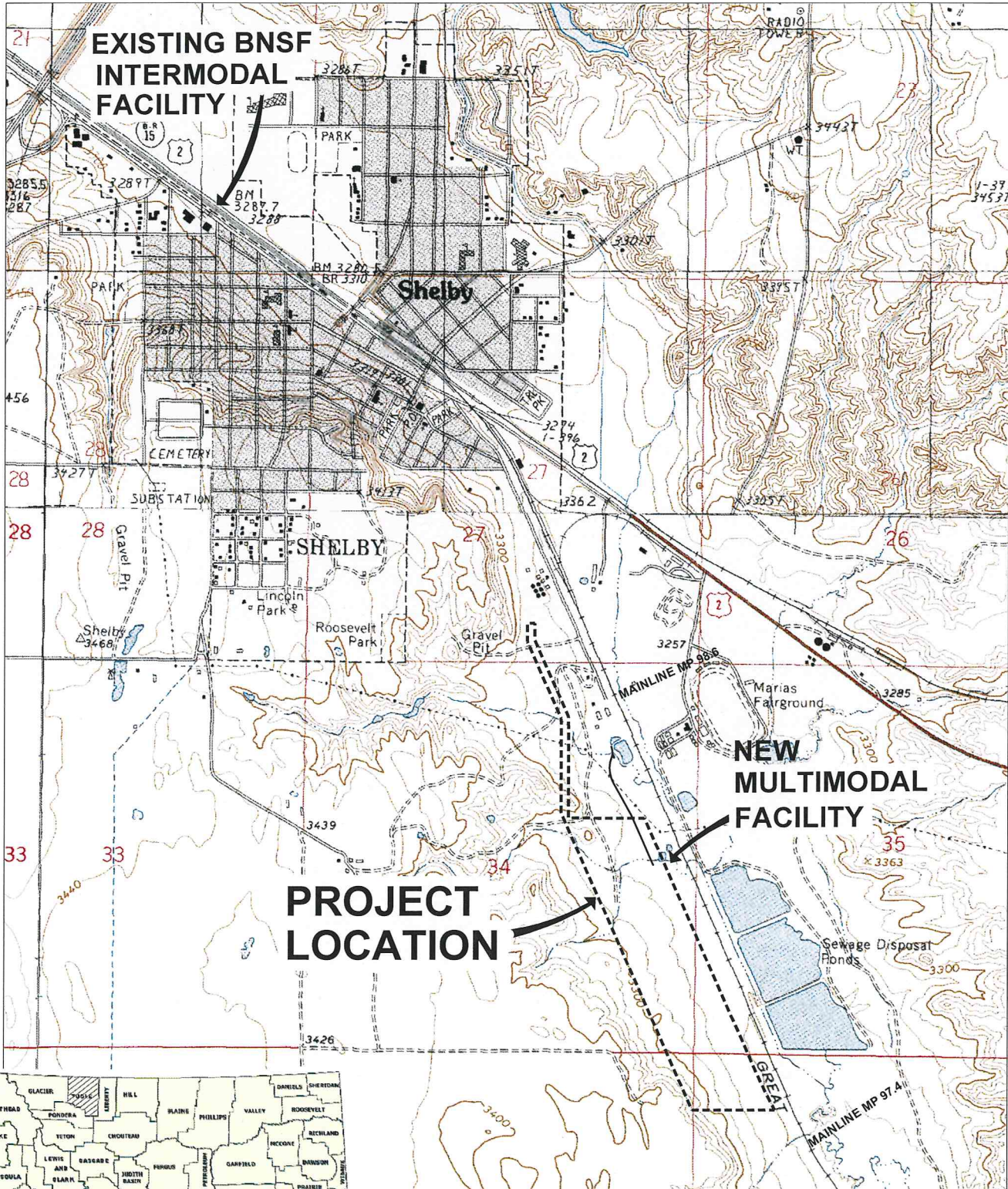


# SHELBY MULTIMODAL HUB

## LOCATION AND VICINITY MAP

### SHELBY, MT



1   01/12/2006 <b>SHELBY MULTIMODALMODAL HUB</b> SURVEY PER CICON AND ASSOCIATES CHESTER, MONTANA 59522	SHEET <b>EX. E</b>		
 <b>Kadmas Lee &amp; Jackson</b> Engineers Surveyors Planners	<b>SHELBY MULTIMODAL HUB</b> LOCATION AND VICINITY MAP TOOLE COUNTY, MONTANA EXHIBIT E		
DRAWN BY ALL	CHKD BY BJK	PROJECT NO. 4410001	DATE 09/30/2011
© Kadmas, Lee & Jackson 2011			